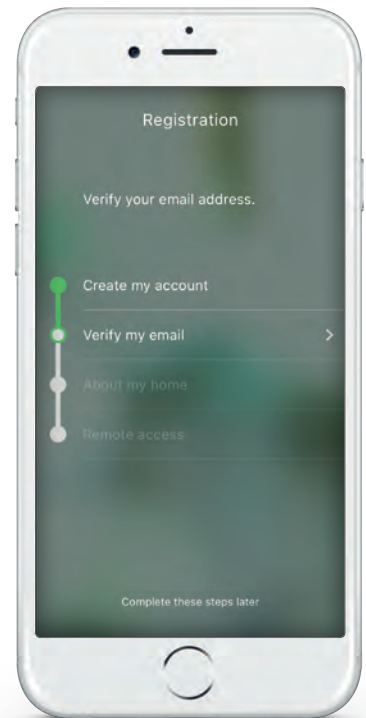
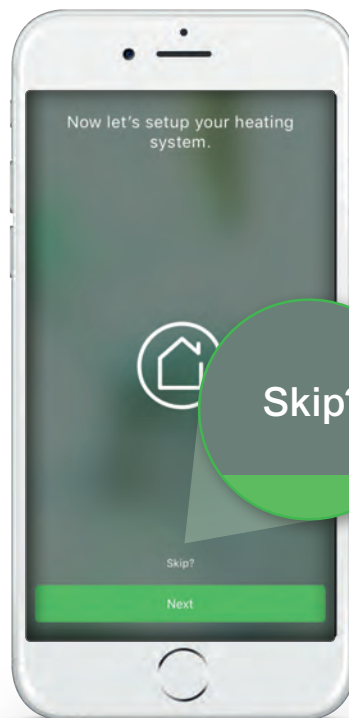
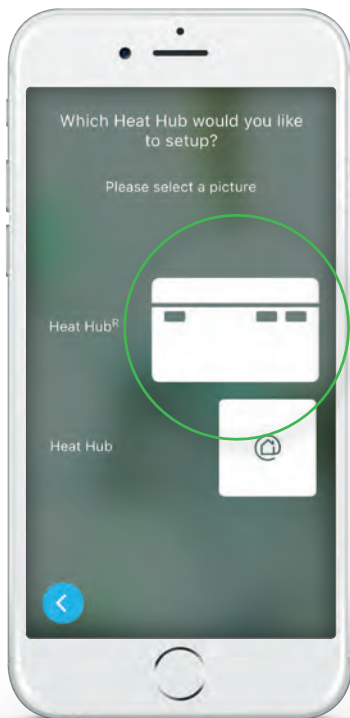


Wiser™

Introducing Wiser, the beautifully simple multi-zone heating system from Drayton.

Download and open the app by searching Wiser Heat then follow the onscreen instructions to help guide you through this set up.



1. Connect your phone to the Wiser Heat Hub^R

- Select **setup/create** account
- Select the **Heat Hub^R** and press **Set Up** on the Heat Hub^R once
- Navigate to the WiFi settings on your phone and select the **WiserHeat** network

(You will see no network connection or network unstable this is perfectly normal and expected)

- Return to the app and your connection is confirmed

2. Connect your Wiser Heat Hub^R to your WiFi

As your devices have already been set up by an installer it's very important to tap **SKIP** here

- Now let's set up the system press **SKIP**
- Connect to home WiFi press **NEXT**
- Select your home WiFi and enter your password then you're connected

! Before you go any further...

Ensure the green light on your Hub is a steady green which can take up to 5 minutes. After this time, if it continues to flash or show any other colour, please call Tech Support on 0333 6000622

Also ensure your phone is connected to the same WiFi network you just connected your Hub to

3. Create your account

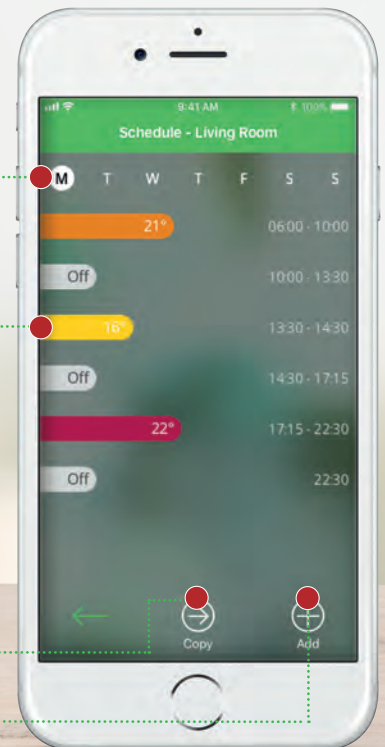
Finally, follow the on-screen instructions:

- Add your name, email address and create a password
- Verify the account from the email you receive
- Return to the app and add your home details

You're now successfully connected to the internet and you can start to explore your Wiser system.

Schedules

Each room fitted with a Wiser device has its own independent schedule. If your daily routine is similar throughout the week, you can set the schedule for the whole day then use the copy function. This will copy the set schedule for each day selected, for this room. Alternatively a different schedule can be defined for each day, for each room. Up to 8 events can be schedule per day.



Select the day

Tap here to edit this event. You define the start time only, the end time automatically populates based on the start of the next event.

Copy this day's schedule to any selected days

Add a new event, define the start time and required temperature

Feature Overview

Current room temperature

Boost enables you to temporarily increase the room temperature by 2°C. Choose between 30 mins, 1hr, 2hrs or 3hrs. Boost can be stopped at any time by tapping the boost icon again

Edit schedule in Auto mode or switch to Manual mode

Slide to the left/right to manually **increase/decrease** the current set point temperature



Schedules enables you to view schedules for each room

Rooms & Devices to view room list and devices around the house

Smart modes activate your smart modes for optimum efficiency